

Limanowskiego 6/21, 30-534 Krakow



+48 515 322608, +48 606 363000



[info@gmlsystem.pl](mailto:info@gmlsystem.pl)



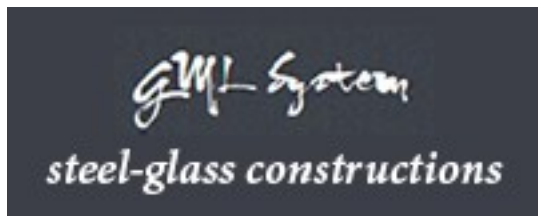
[www.gmlsystem.eu](http://www.gmlsystem.eu)

## Offer for facade cladding with corten, alucobond, glass

This overview contains proposals of facade cladding taken from our real life realizations and has been created to facilitate selection process as an addition to our offer presented in the gallery for facades.

The solutions presented are grouped depending on material used:

1. corten steel sheets,
2. composites with aluminium, such as alucobond,
3. glass



Limanowskiego 6/21, 30-534 Krakow



+48 515 322608, +48 606 363000



[info@gmlsystem.pl](mailto:info@gmlsystem.pl)

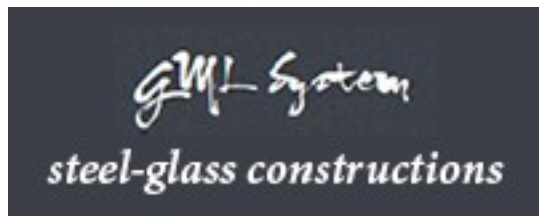


[www.gmlsystem.eu](http://www.gmlsystem.eu)

## Facade cladding with metal

### Facade cladding with panels from perforated corten

Facade cassettes from corten steel mounted on support frames made of aluminum, steel or stainless steel profiles



Limanowskiego 6/21, 30-534 Krakow



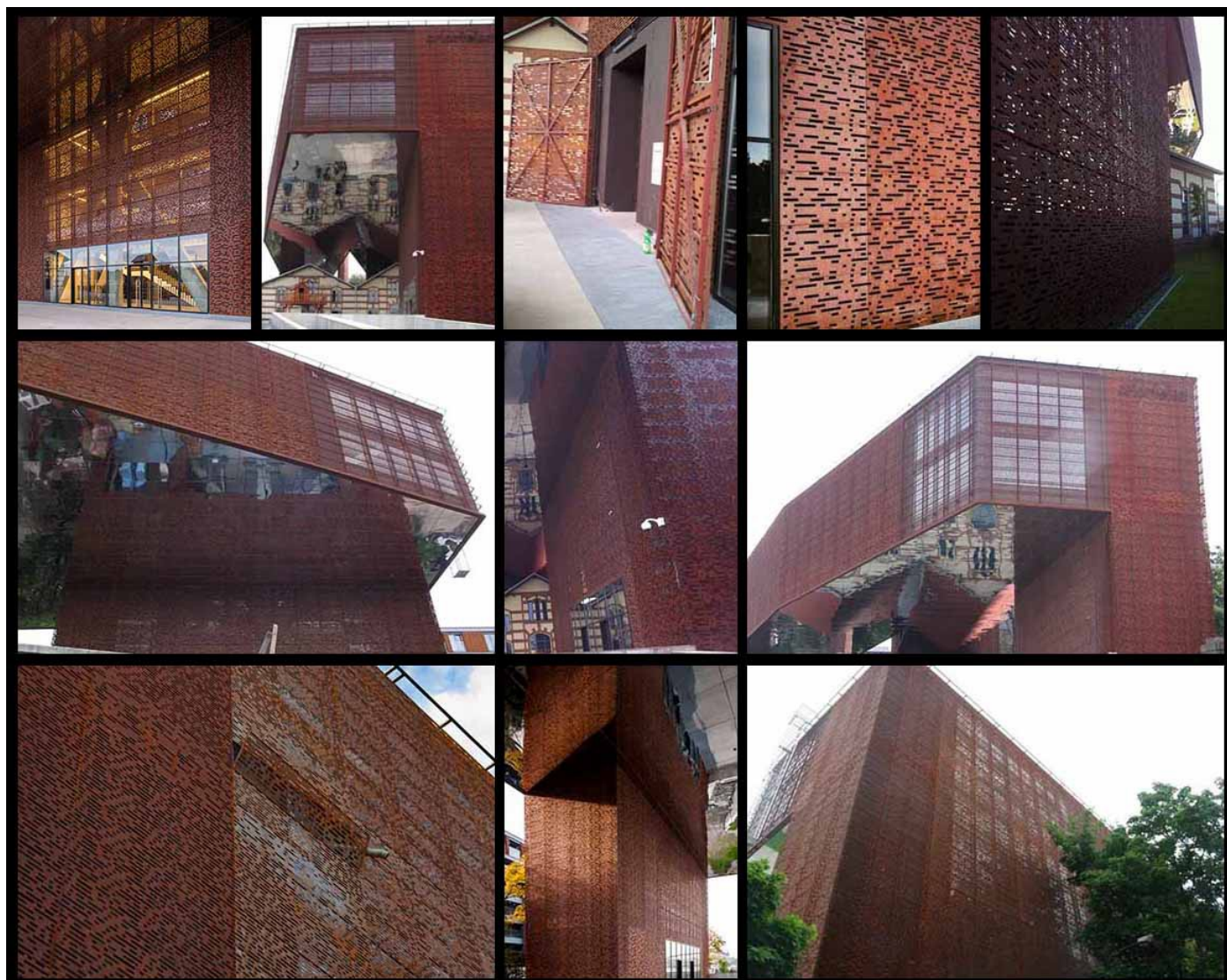
+48 515 322608, +48 606 363000



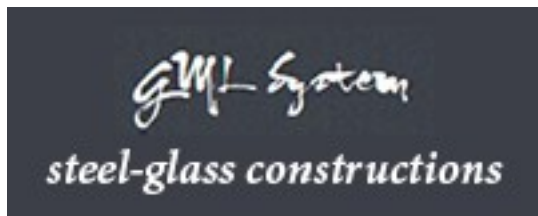
[info@gmlsystem.pl](mailto:info@gmlsystem.pl)



[www.gmlsystem.eu](http://www.gmlsystem.eu)







Limanowskiego 6/21, 30-534 Krakow



+48 515 322608, +48 606 363000



[info@gmlsystem.pl](mailto:info@gmlsystem.pl)



[www.gmlsystem.eu](http://www.gmlsystem.eu)

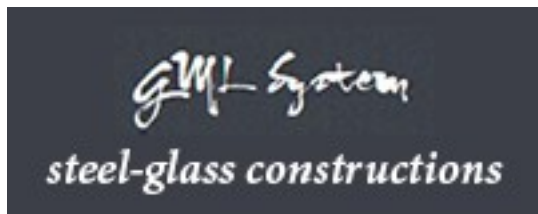


## Facade cladding with corten panels

Facade cassettes from corten steel mounted on support frames made of aluminum, steel or stainless steel profiles







Limanowskiego 6/21, 30-534 Krakow



+48 515 322608, +48 606 363000



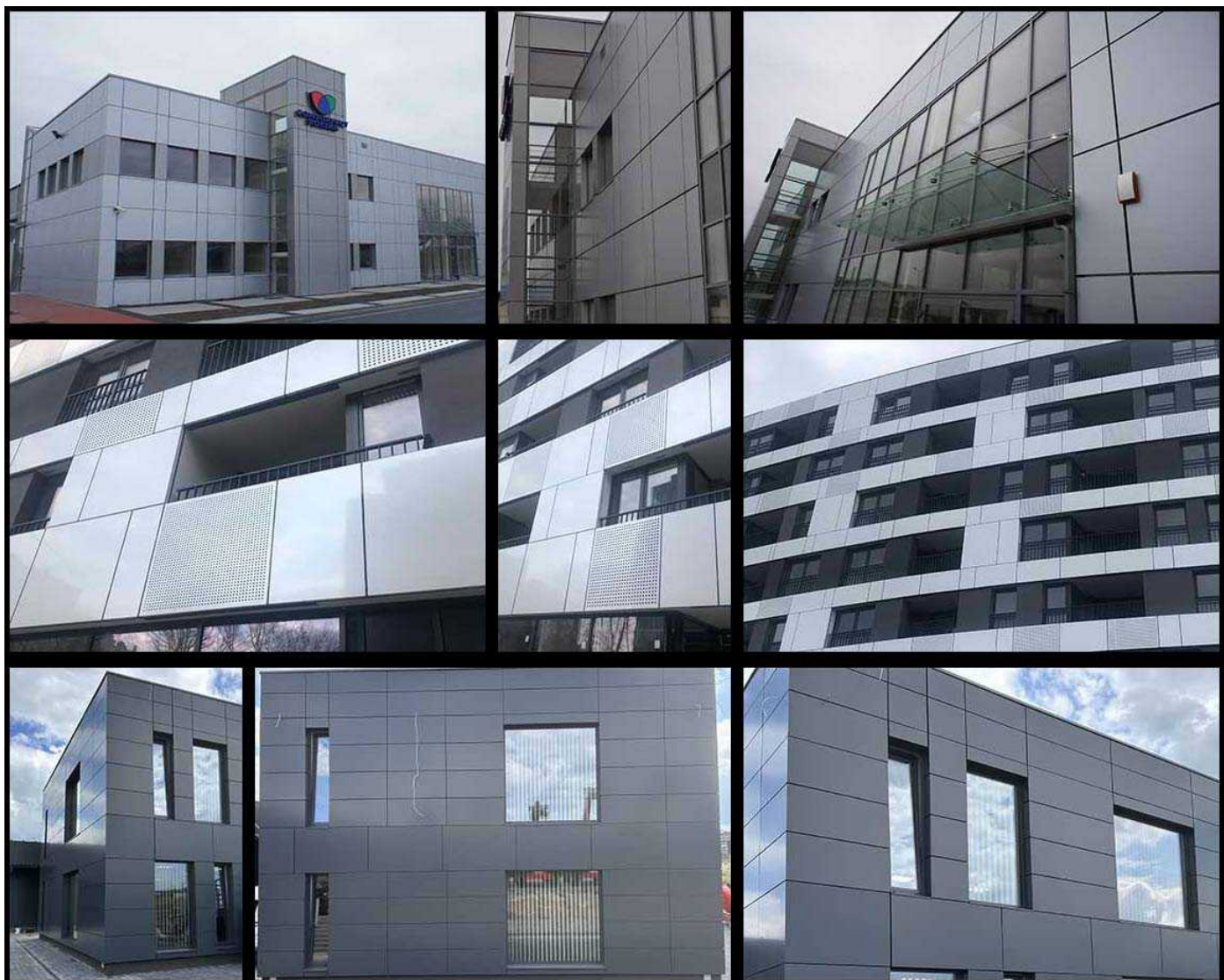
[info@gmlsystem.pl](mailto:info@gmlsystem.pl)

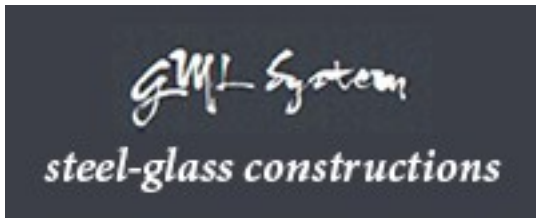


[www.gmlsystem.eu](http://www.gmlsystem.eu)

## Facade cladding with Alucobond panels

Facade cassettes from Alucobond mounted on support frames made of aluminum, steel or stainless steel profiles





Limanowskiego 6/21, 30-534 Krakow



+48 515 322608, +48 606 363000



[info@gmlsystem.pl](mailto:info@gmlsystem.pl)

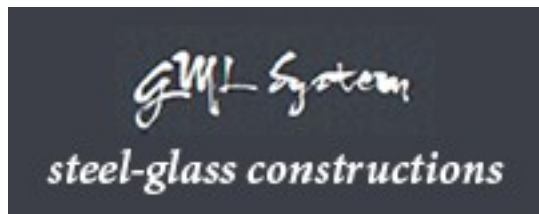


[www.gmlsystem.eu](http://www.gmlsystem.eu)

## Facade cladding with glass

### Facade cladding with glass panels

Facade panels from glass mounted on support structure in the form of aluminium frame, glass panels fixed with aluminium profiles, rubber bands as isolation



Limanowskiego 6/21, 30-534 Krakow



+48 515 322608, +48 606 363000



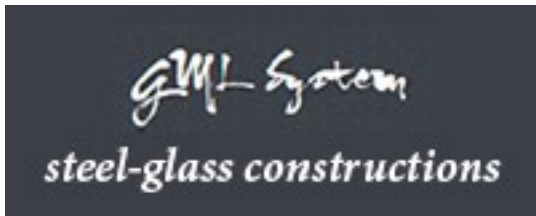
[info@gmlsystem.pl](mailto:info@gmlsystem.pl)



[www.gmlsystem.eu](http://www.gmlsystem.eu)







Limanowskiego 6/21, 30-534 Krakow



+48 515 322608, +48 606 363000



[info@gmlsystem.pl](mailto:info@gmlsystem.pl)



[www.gmlsystem.eu](http://www.gmlsystem.eu)

## Our Services

We offer the following services:

1. Free advise - just call if you wish to discuss an idea or potential project.
2. Guidance on all aspects of product selection.

Our web site has been designed to assist you in the selection process. It contains a catalogue of construction types in the form of photo galleries with sample solutions taken from our real life projects as well as presentation of sample projects organized in offers for different target groups: home owner, business owner and developer.

3. Free of charge cost estimate based on provided by you quantity survey.
4. Design - we act in all ways to ensure that your construction is designed to meet your needs precisely.
5. Manufacture in our workshop.
6. Supply to your location.
7. On site installation service, if required.