

Limanowskiego 6/21, 30-534 Krakow



+48 515 322608, +48 606 363000



info@gmlsystem.pl

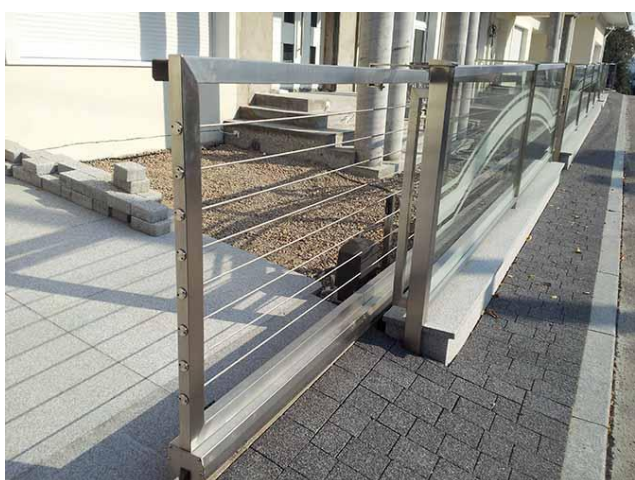


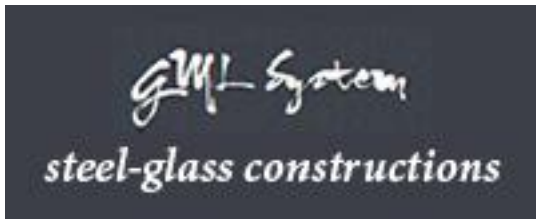
www.gmlsystem.eu

Cantilever sliding gate with wire infill from stainless steel (Product RKS-T-ISCHTOR-8-E)

Self-supporting sliding gate from polished stainless steel. Filling with horizontal wire rope.

Example project





Limanowskiego 6/21, 30-534 Krakow



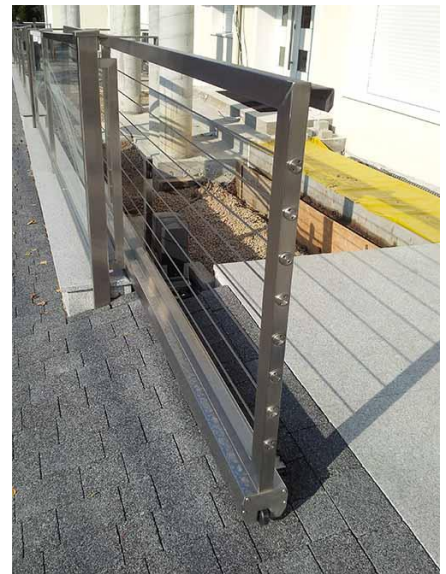
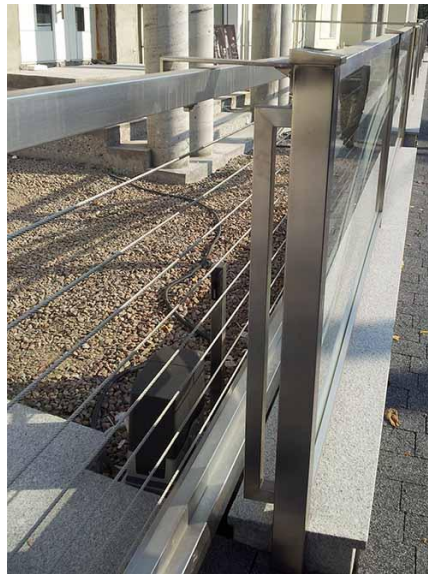
+48 515 322608, +48 606 363000



info@gmlsystem.pl

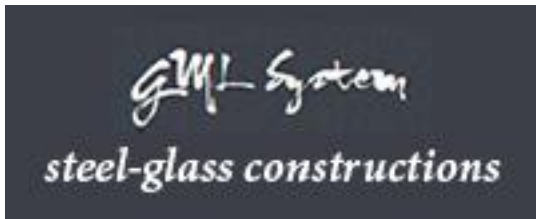


www.gmlsystem.eu



Technical Details:

1. gate type: cantilever sliding gate, self-supporting,
2. opening width: 2500mm,
3. height: 1500mm,
4. filling: with horizontal wire rope \varnothing 6mm from stainless steel,
5. gate construction: welded frame from profiles 40x60mm with ground track 120x100x5mm,



Limanowskiego 6/21, 30-534 Krakow



+48 515 322608, +48 606 363000



info@gmlsystem.pl



www.gmlsystem.eu

6. material: stainless steel, polished,
7. posts: single receiver post from square tube profile 80x80mm on footplate, upper guide bracket fixed to a fence post,
8. automation: electrical drive equipped with remote control, Beninca BULL

Production time 4-6 weeks

Welded construction. Pre-assembly of the whole construction takes place in workshop.