

Limanowskiego 6/21, 30-534 Krakow



+48 515 322608, +48 606 363000



[info@gmlsystem.pl](mailto:info@gmlsystem.pl)



[www.gmlsystem.eu](http://www.gmlsystem.eu)

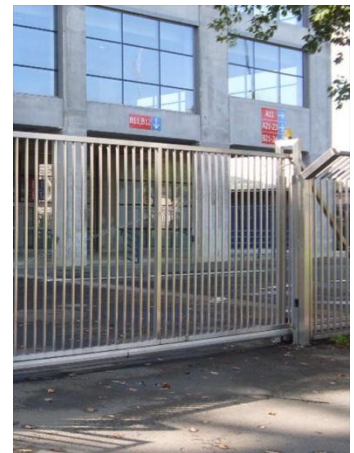
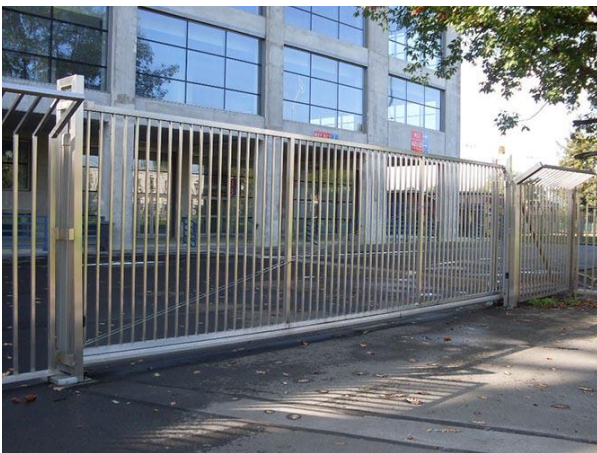
## **Cantilever sliding gate with bars infill from stainless steel ( Product RKS-T-ISCHTOR-5-E )**

### **Self-supporting sliding gate from stainless steel with horizontal bar infill.**

Standard gates for 4-10 m driveway, 1.5 to 2.4 m height.

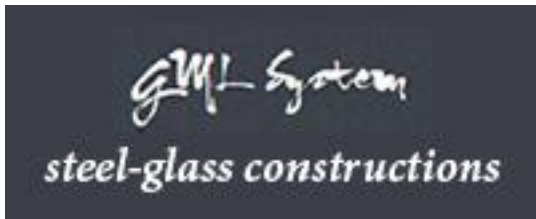
Roller carriages built into ground track.

### **Example project**



### **Technical Details:**

1. gate type: cantilever sliding gate, self-supporting,
2. opening width: 6000mm,
3. height: 2200mm,
4. filling: horizontal bars with distance between bars about 100mm,



Limanowskiego 6/21, 30-534 Krakow



+48 515 322608, +48 606 363000



[info@gmlsystem.pl](mailto:info@gmlsystem.pl)



[www.gmlsystem.eu](http://www.gmlsystem.eu)

5. gate construction: welded frame from square tube profiles with welded infill bars screwed to ground track 120x100x5mm,
6. material and color: polished stainless steel,
7. posts: double guiding frame and double receiver post from square tube on footplate,
8. accessories: 2 high-quality roller carriages with 12 rolls each, 1 hook lock, Locinox against surcharge,
9. automation: electrical drive equipped with remote control, Beninca BULL

### **Production time 4-6 weeks**

Welded construction. Pre-assembly of the whole construction takes place in workshop.