

Limanowskiego 6/21, 30-534 Krakow



+48 515 322608, +48 606 363000



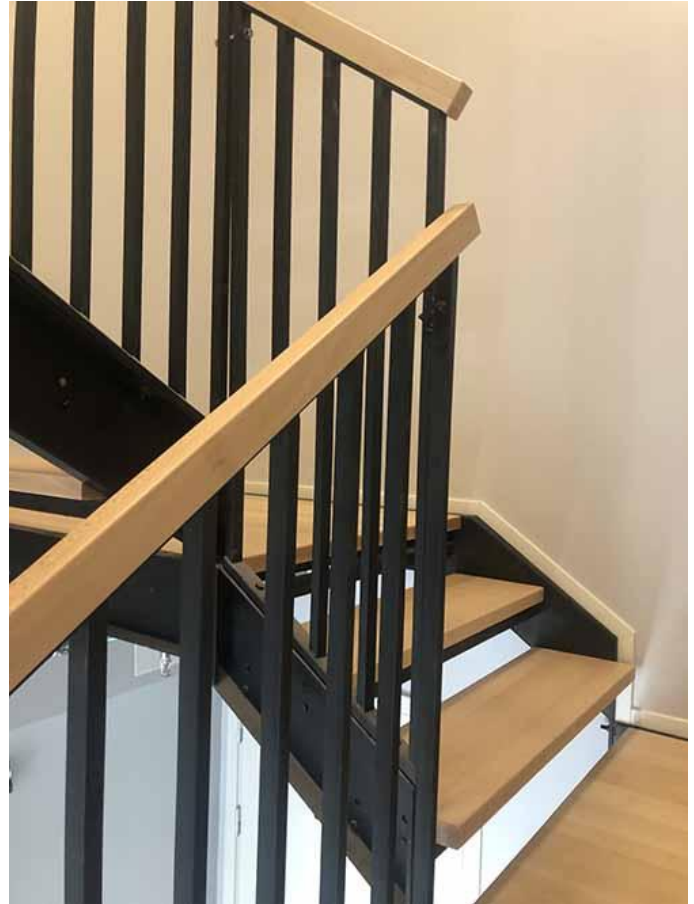
info@gmlsystem.pl

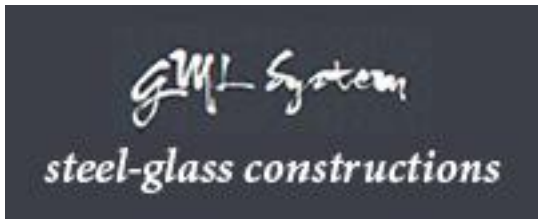


www.gmlsystem.eu

Cheek stairs from painted steel with wooden steps (Product LCH-T-STAHl-6-S)

Sample project





Limanowskiego 6/21, 30-534 Krakow



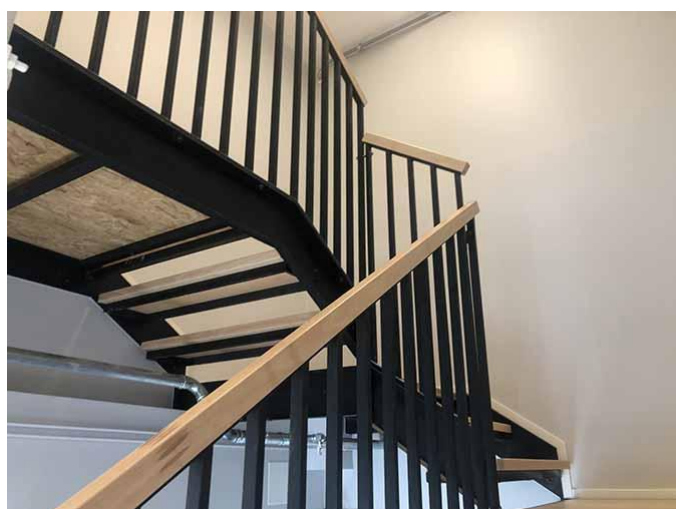
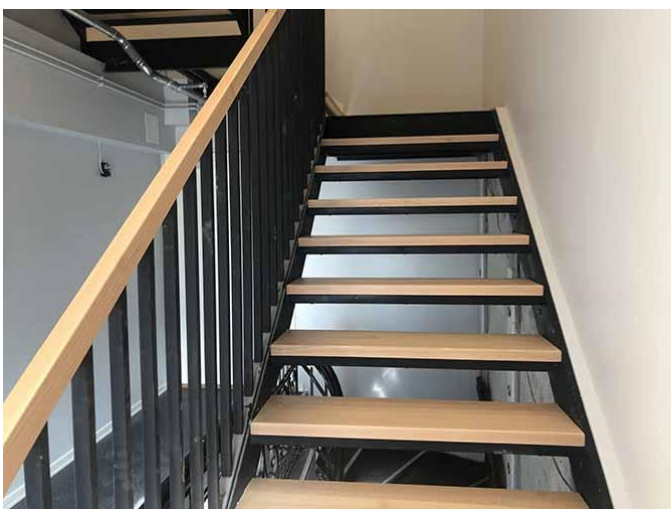
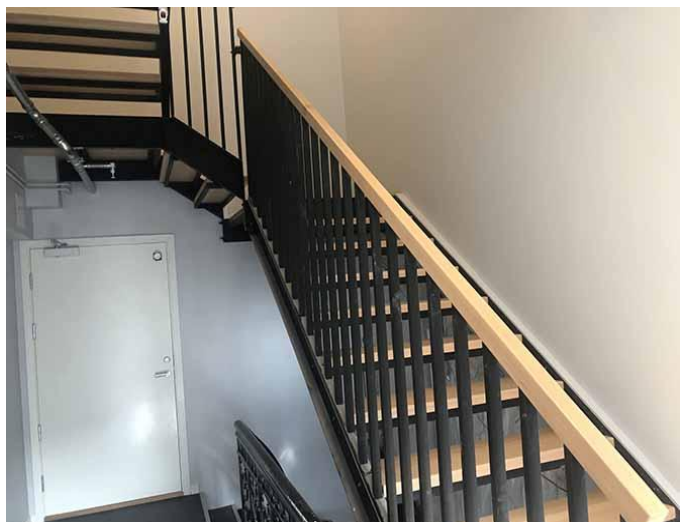
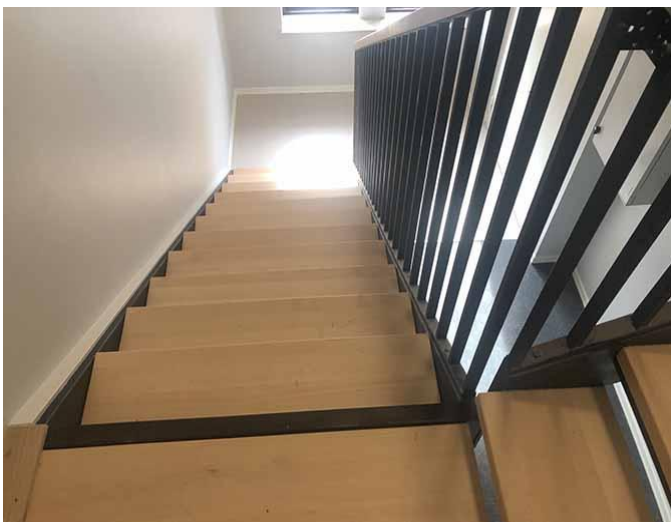
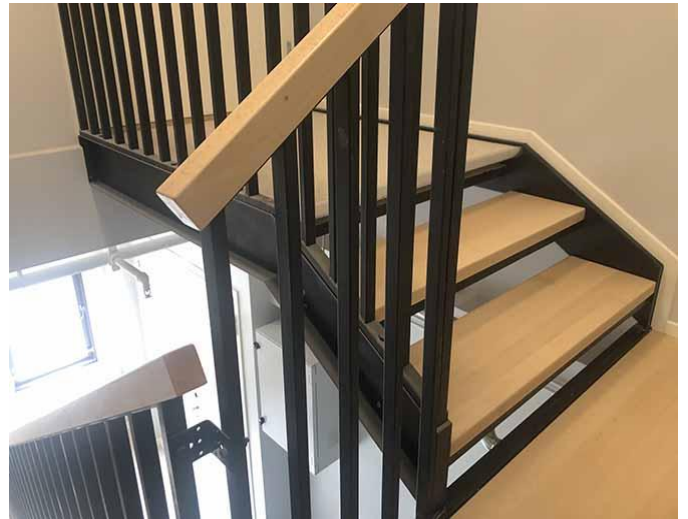
+48 515 322608, +48 606 363000

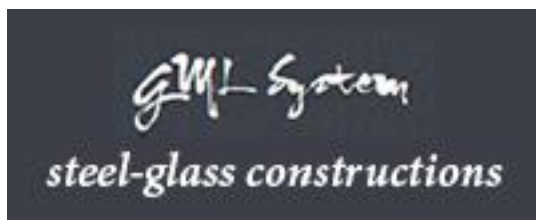


info@gmlsystem.pl



www.gmlsystem.eu





Limanowskiego 6/21, 30-534 Krakow



+48 515 322608, +48 606 363000



info@gmlsystem.pl



www.gmlsystem.eu

Technical Details:

1. type: cheek,
2. width: 100cm,
3. total height: 320cm,
4. material: powder painted, any color from the RAL color palette, wood,
5. construction: supporting structure consisting of beams made of steel profiles, steps and landings covered with wooden boards,
6. balustrade: steel railing with vertical infill bars and wooden handrail.

Production time 4-5 weeks