

Limanowskiego 6/21, 30-534 Krakow



+48 515 322608, +48 606 363000



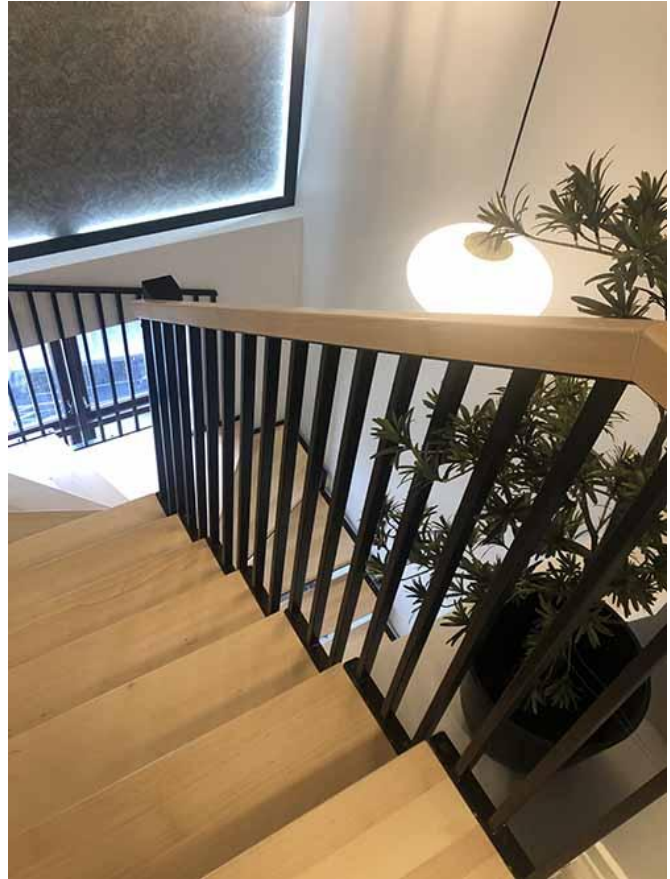
info@gmlsystem.pl

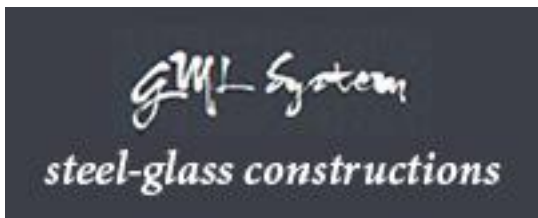


www.gmlsystem.eu

Winder stairs from galvanized steel with wooden steps (Product LCH-T-STAHl-5-S)

Sample project





Limanowskiego 6/21, 30-534 Krakow



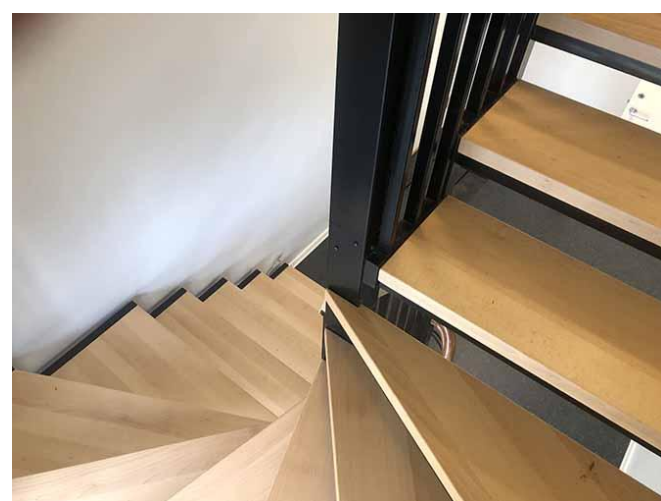
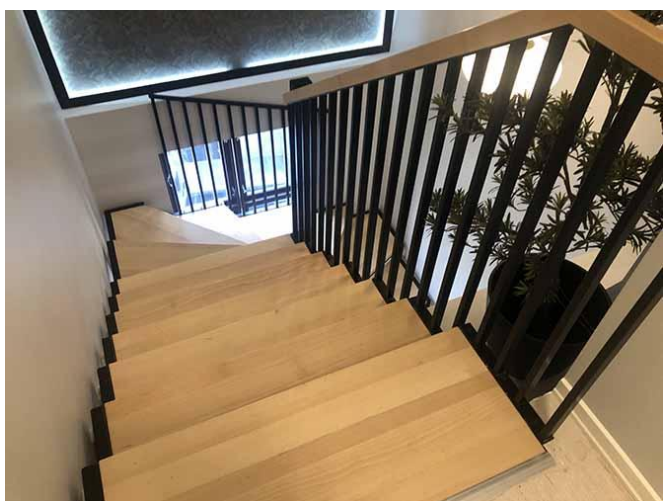
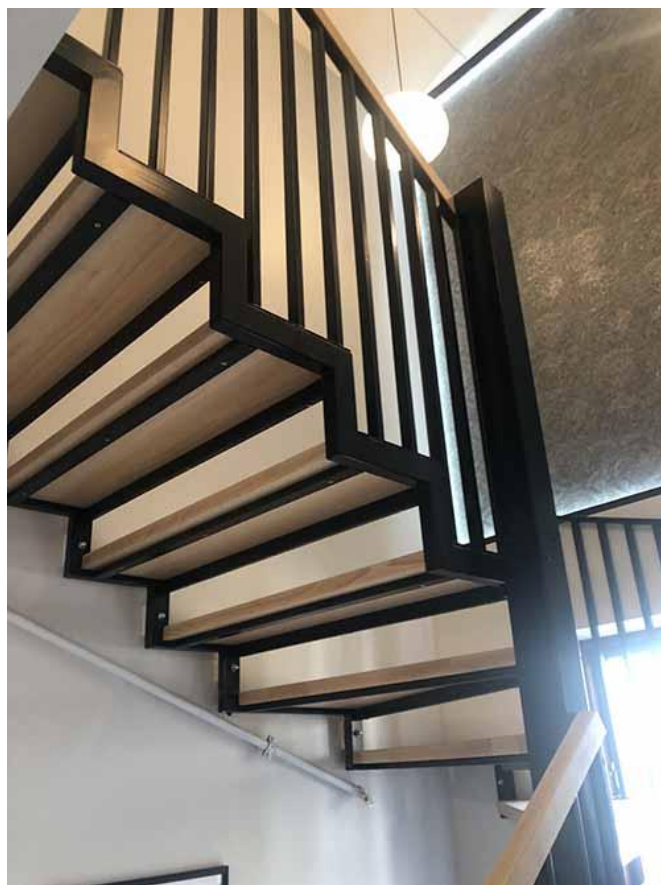
+48 515 322608, +48 606 363000

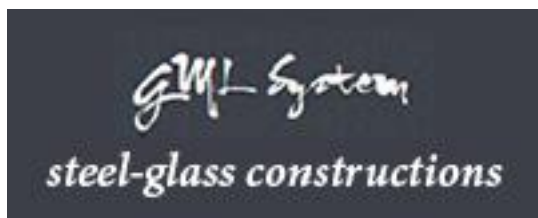


info@gmlsystem.pl



www.gmlsystem.eu





Limanowskiego 6/21, 30-534 Krakow



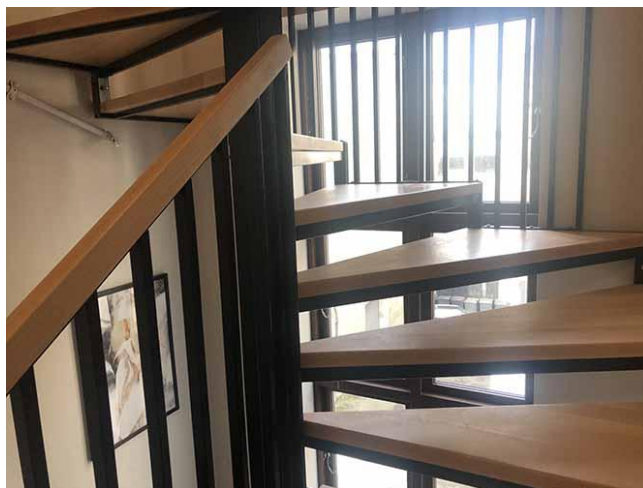
+48 515 322608, +48 606 363000



info@gmlsystem.pl



www.gmlsystem.eu



Technical Details:

1. type: winder,
2. width: 100cm,
3. total height: 320cm,
4. material: powder painted steel, any color from the RAL color palette, wood,
5. construction: supporting structure consisting of beams made of steel profiles, wooden steps,
6. balustrade: steel railing with vertical infill bars and wooden handrail.

Production time 4-5 weeks