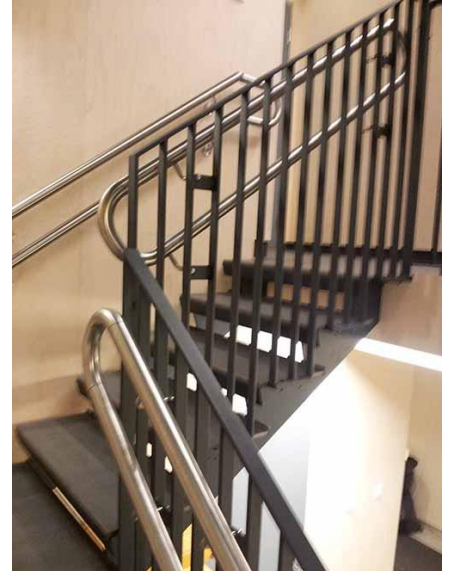
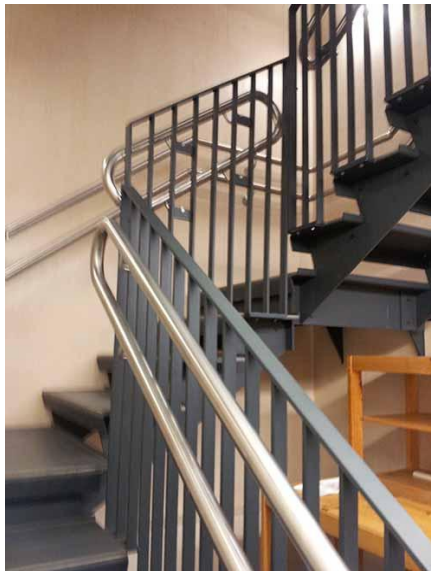




Cheek staircase from painted steel with steps from steel sheet **(Product LCH-T-STAHl-4-E)**

Sample project





Technical Details:

1. type: cheek,
2. width: 90cm,
3. total height: 320cm,
4. material: powder painted, any color from the RAL color palette, stainless steel,
5. construction: supporting structure consisting of beams made of steel profiles, steps and landings covered with steel sheet,
6. balustrade: steel balustrade with vertical infill bars and double handrail from stainless steel.

Production time 4-5 weeks