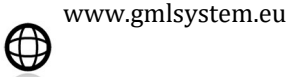
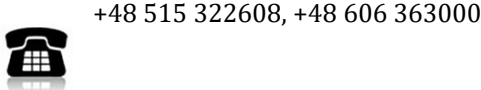
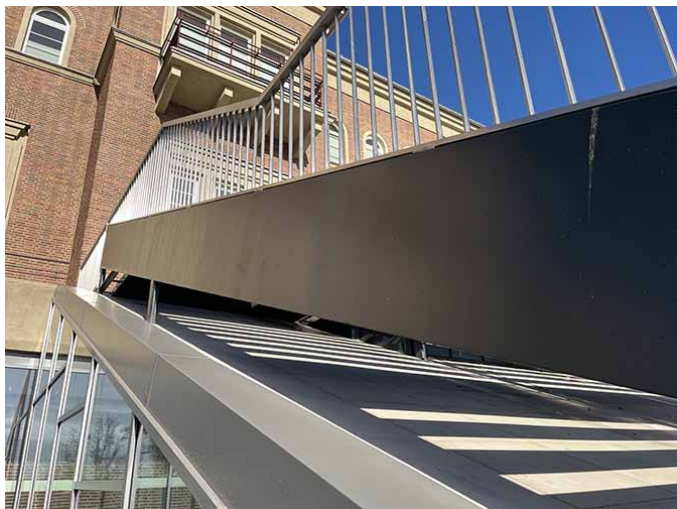


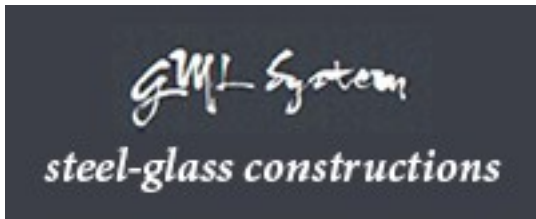
Limanowskiego 6/21, 30-534 Krakow



Cheek staircase from galvanized and painted steel with steps from steel grid (Product LCH-T-STAHl-15-S)

Sample project





Limanowskiego 6/21, 30-534 Krakow



+48 515 322608, +48 606 363000



info@gmlsystem.pl



www.gmlsystem.eu

Technical Details:

1. type: cheek,
2. width: 150cm,
3. total height: 320cm,
4. material: galvanized steel, powder painted, any color from the RAL color palette, stainless steel,
5. construction: supporting structure consisting of beams and poles made of steel sheet and profiles, steps from steel grid,
6. balustrade: stainless steel railing with vertical infill bars.

Production time 4-5 weeks