

Limanowskiego 6/21, 30-534 Krakow



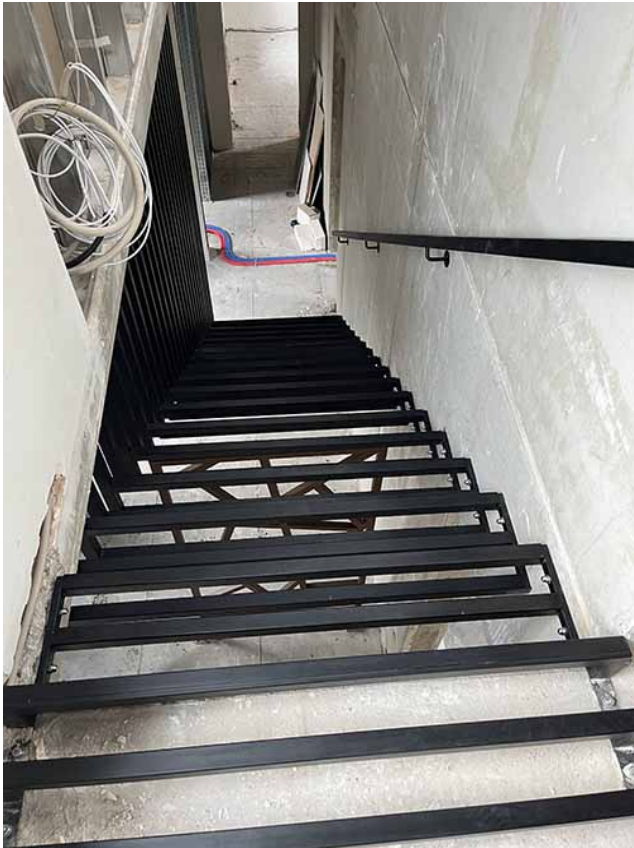
+48 515 322608, +48 606 363000

@ info@gmlsystem.pl

www.gmlsystem.eu

Stairs from painted steel (Product LCH-T-STAHl-14-S)

Sample project





GML System
steel-glass constructions

+48 515 322608, +48 606 363000



info@gmlsystem.pl

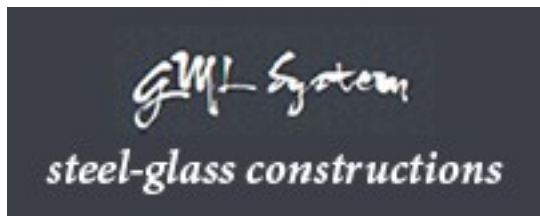


www.gmlsystem.eu



Technical Details:

1. width: 120cm,
2. total height: 300cm,
3. material: powder painted steel, any color from the RAL color palette,
4. construction: supporting structure consisting of frames made from steel profiles,
5. balustrade: handrail from steel profile.



Limanowskiego 6/21, 30-534 Krakow



+48 515 322608, +48 606 363000



info@gmlsystem.pl



www.gmlsystem.eu



Production time 4-5 weeks