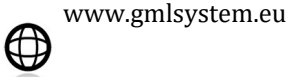
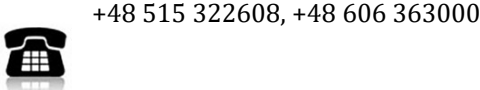
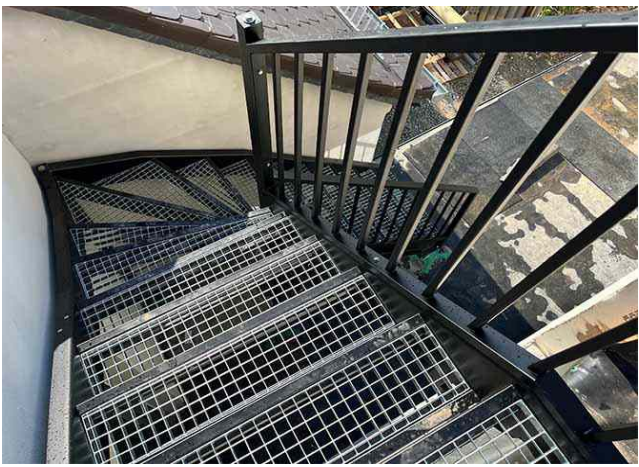
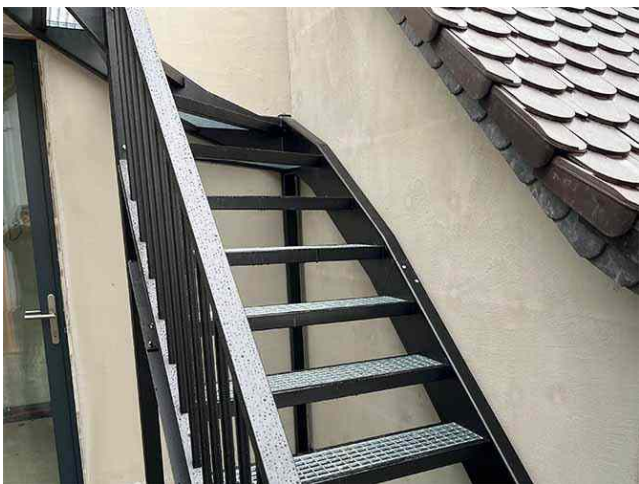


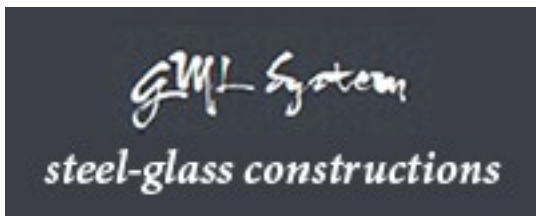
Limanowskiego 6/21, 30-534 Krakow



Winder stairs from painted steel with steps from steel grid (Product LCH-T-STAHl-13-S)

Sample project





Limanowskiego 6/21, 30-534 Krakow



+48 515 322608, +48 606 363000



info@gmlsystem.pl

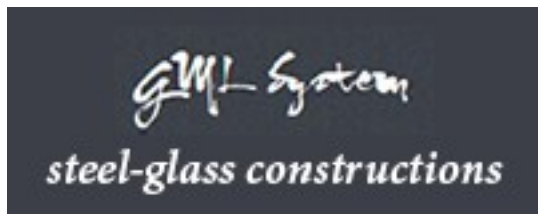


www.gmlsystem.eu



Technical Details:

1. type: winder,
2. width: 100cm,
3. total height: 320cm,
4. material: galvanized and powder painted steel, any color from the RAL color palette,
5. construction: supporting structure consisting of beams and poles made from steel sheet and profiles, steps covered with steel grid,
6. balustrade: steel railing with vertical infill bars.



Limanowskiego 6/21, 30-534 Krakow



+48 515 322608, +48 606 363000



info@gmlsystem.pl



www.gmlsystem.eu

Production time 4-5 weeks