

Limanowskiego 6/21, 30-534 Krakow



+48 515 322608, +48 606 363000



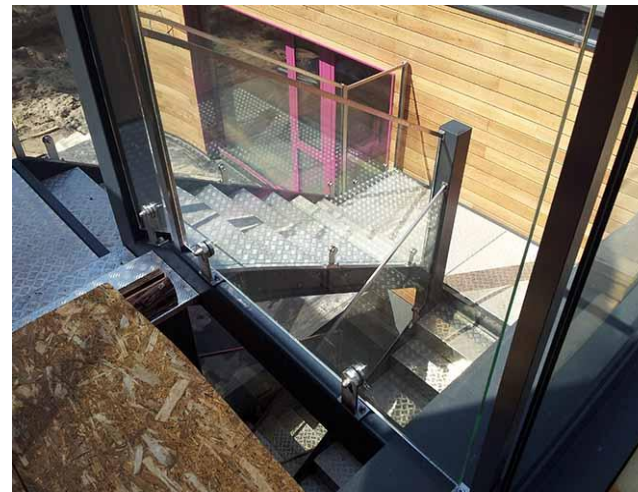
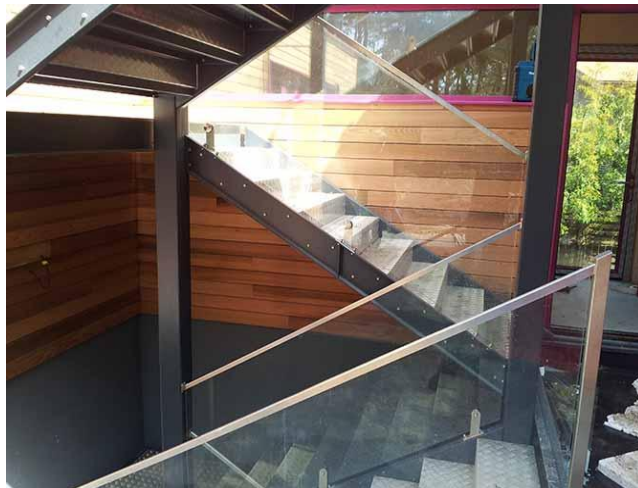
info@gmlsystem.pl

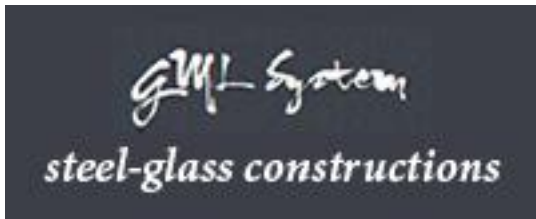


www.gmlsystem.eu

Cheek staircase from galvanized steel with steps from steel sheet (Product LCH-T-STAHLE-1-G)

Sample project





Limanowskiego 6/21, 30-534 Krakow



+48 515 322608, +48 606 363000



info@gmlsystem.pl



www.gmlsystem.eu



Technical Details:

1. type: cheek,
2. width: 100cm,
3. total height: 350cm,
4. material: galvanized steel, powder painted, any color from the RAL color palette, glass,
5. construction: supporting structure consisting of beams and poles made of steel profiles, steps and landings covered with steel sheet,
6. balustrade: self supporting glass balustrade mounted using stainless steel standoffs.

Production time 4-5 weeks