

Limanowskiego 6/21, 30-534 Krakow



+48 515 322608, +48 606 363000



info@gmlsystem.pl



www.gmlsystem.eu

Winder stairs from stainless steel with steps from glass (Product LCH-T-ESTABL-4-G)

Sample project





Limanowskiego 6/21, 30-534 Krakow



+48 515 322608, +48 606 363000

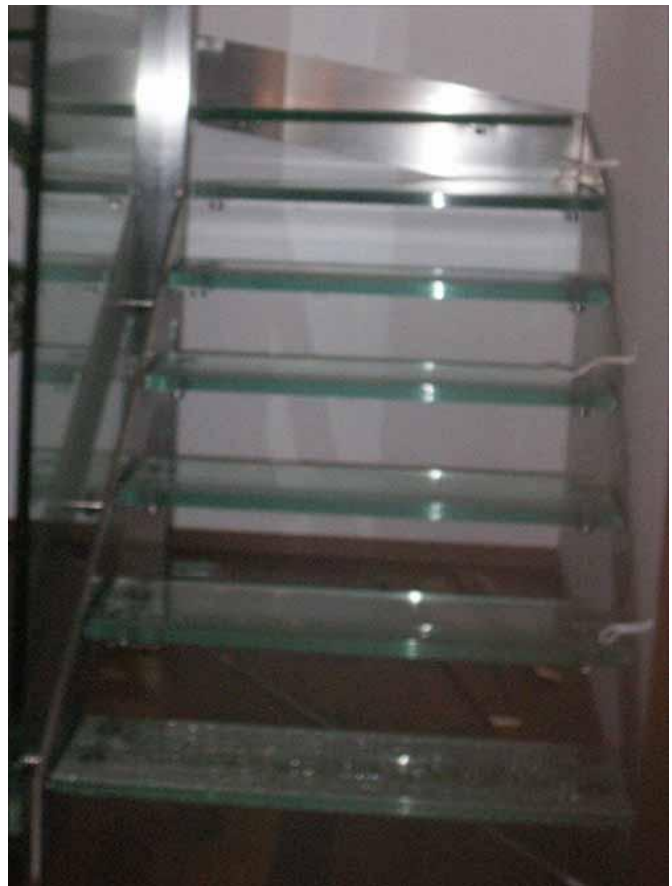


info@gmlsystem.pl



www.gmlsystem.eu





Technical Details:

1. type: winder,
2. width: 100cm,
3. total height: 280cm,
4. material: stainless steel, glass,
5. construction: supporting structure consisting of beams made from stainless steel profiles, steps from hardened glass,
6. balustrade: frameless glass balustrade.

Production time 4-5 weeks