

Limanowskiego 6/21, 30-534 Krakow



+48 515 322608, +48 606 363000



info@gmlsystem.pl



www.gmlsystem.eu

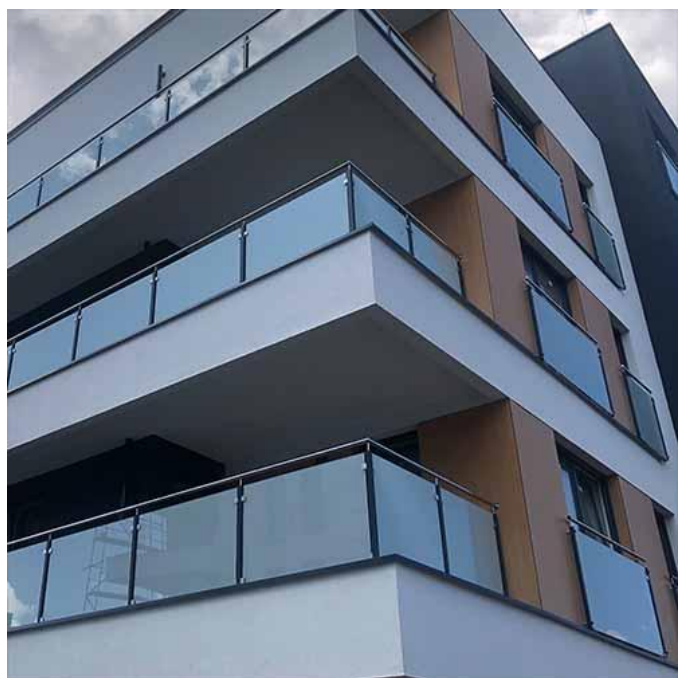
Stainless steel glass balustrade for terraces and balconies **(Product LCH-G-GLAS-8-E)**

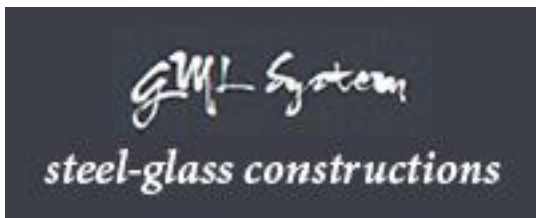
Stainless steel glass balustrade with high polished tubular handrail and posts from painted steel profiles. Laminated safety glass VSG for infill.

Posts, handrails and fittings available in 304 or 316 grade stainless steel.

Glass panels in clear, laminated safety glass VSG with milk foil.

Sample project





Limanowskiego 6/21, 30-534 Krakow



+48 515 322608, +48 606 363000



info@gmlsystem.pl

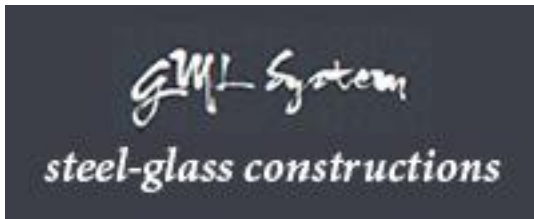


www.gmlsystem.eu



Technical Details:

1. high polished stainless steel handrail from tube Ø 42 mm,
2. posts from square steel profile 50x50x2 mm,
3. height 1000 mm (to top of rail),
4. filling with clear, laminated, safety glass VSG 44.2 with milk foil,
5. handrail supports,
6. stainless steel glass clamps,
7. base plates or wall brackets, depending on the mounting method



Limanowskiego 6/21, 30-534 Krakow



+48 515 322608, +48 606 363000



info@gmlsystem.pl



www.gmlsystem.eu

Top or side mounting method.

Production time 3-5 weeks

Stainless steel fittings: glass clamps, wall brackets, handrail supports, base plates, end caps, come from our own production and are available in 304 or 316 grade steel.