

Limanowskiego 6/21, 30-534 Krakow



+48 515 322608, +48 606 363000



info@gmlsystem.pl



www.gmlsystem.pl

Stainless steel glass balustrade, handrail with wooden top for internal stairs, terraces and balconies (Product LCH-G-GLAS-4-H)

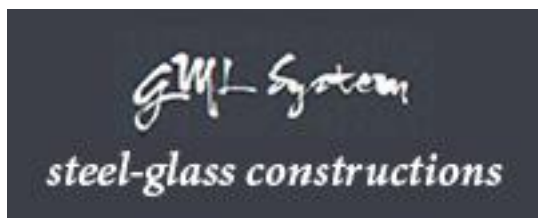
Stainless steel glass balustrade with high polished square profile posts and handrail. Filling from laminated safety glass VSG.

Posts, handrails and fittings available in 304 or 316 grade stainless steel.

Glass panels in clear, laminated safety glass VSG. Wooden top on handrail.

Sample project





Limanowskiego 6/21, 30-534 Krakow



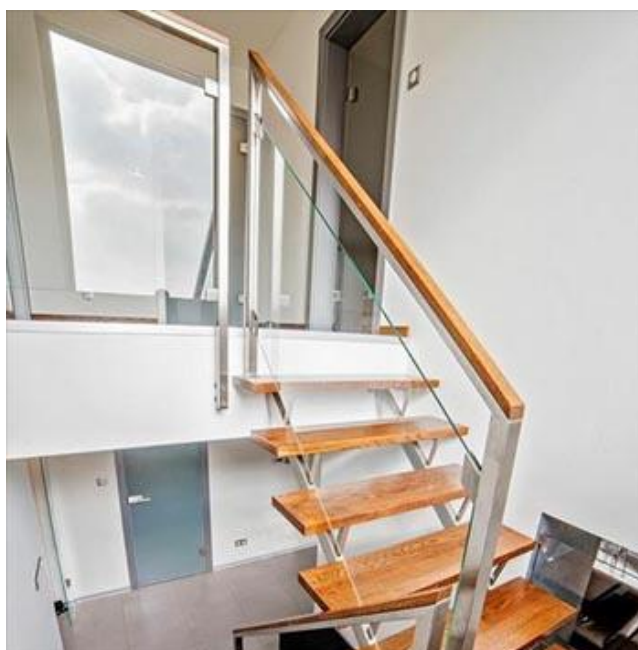
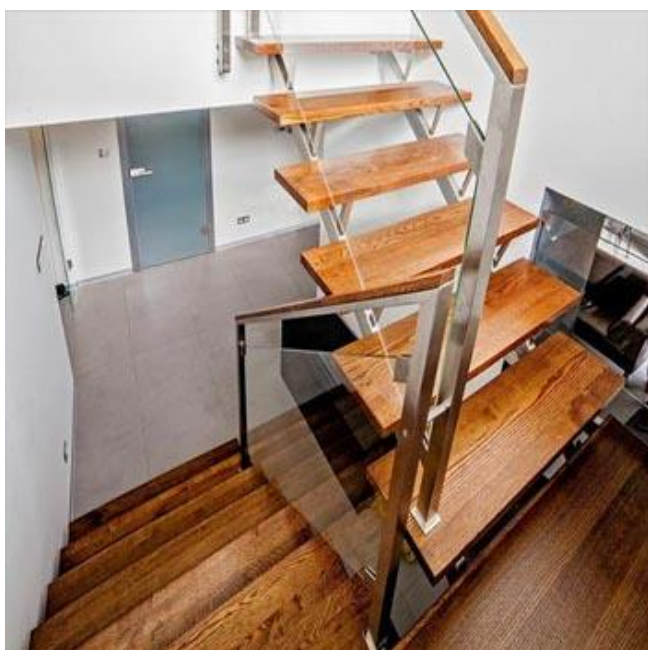
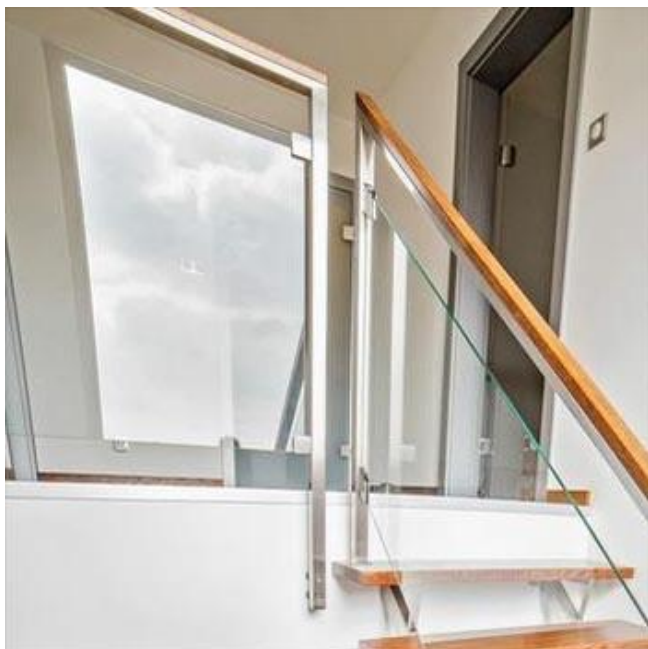
+48 515 322608, +48 606 363000



info@gmlsystem.pl

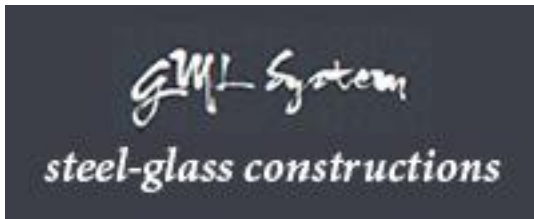


www.gmlsystem.pl



Technical Details:

1. high polished stainless steel handrail and posts from square profile 40x40x2 mm,
2. height 1000 mm (to top of rail),



Limanowskiego 6/21, 30-534 Krakow



+48 515 322608, +48 606 363000



info@gmlsystem.pl



www.gmlsystem.pl

3. handrail with wooden top,
4. filling with clear, laminated, safety glass VSG 44.2,
5. stainless steel square glass clamps,
6. wall flanges or base plates with cover caps, depending on mounting, top or side

Top and side mounting available.

Production time 3-5 weeks

Pre-assembly of posts with other parts, such as handrail and base plates, take place in workshop.

Stainless steel fittings: glass clamps, wall flanges, cover and end caps, come from our own production and are available in 304 or 316 grade steel.