

Limanowskiego 6/21, 30-534 Krakow



+48 515 322608, +48 606 363000



info@gmlsystem.pl



www.gmlsystem.pl

Stainless steel glass balustrade for external stairs, terraces and balconies (Product LCH-G-GLAS-2-E)

Stainless steel glass balustrade with high polished tubular posts and handrail.

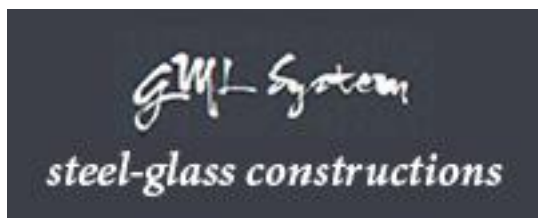
Filling from laminated safety glass VSG or HPL (High Pressure Laminate) plates.

Posts, handrails and fittings available in 304 or 316 grade stainless steel.

Glass panels in milk, clear glass or, on request, in color. HPL panels available in various colors.

Sample project





Limanowskiego 6/21, 30-534 Krakow



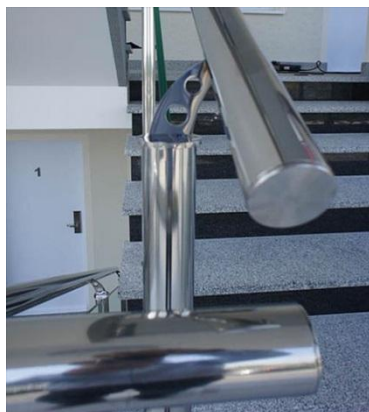
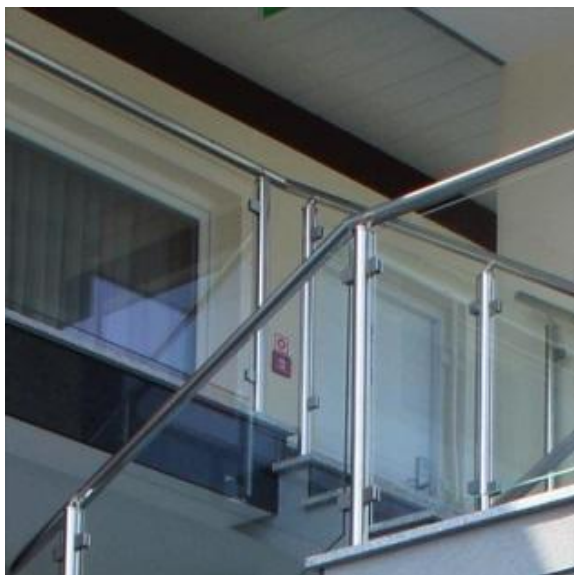
+48 515 322608, +48 606 363000

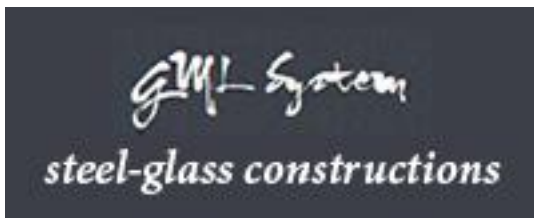


info@gmlsystem.pl



www.gmlsystem.pl





Limanowskiego 6/21, 30-534 Krakow



+48 515 322608, +48 606 363000



info@gmlsystem.pl



www.gmlsystem.pl

Technical Details:

1. high polished stainless steel handrail and posts from tube Ø 42 mm,
2. height 1000 mm (to top of rail),
3. filling with clear, laminated, safety glass VSG 44.2 or with HPL panels,
4. handrail brackets,
5. stainless steel square glass clamps,
6. wall brackets or base plates with cover caps, depending on mounting method, top or side

Top and side mounting methods available.

Production time 3-5 weeks

Pre-assembly of posts with other parts, such as handrail brackets and base plates, take place in workshop.

Stainless steel fittings: glass clamps, wall brackets, handrail brackets, cover and end caps, come from our own production and are available in 304 or 316 grade steel.