

Limanowskiego 6/21, 30-534 Krakow



+48 515 322608, +48 606 363000



[info@gmlsystem.pl](mailto:info@gmlsystem.pl)



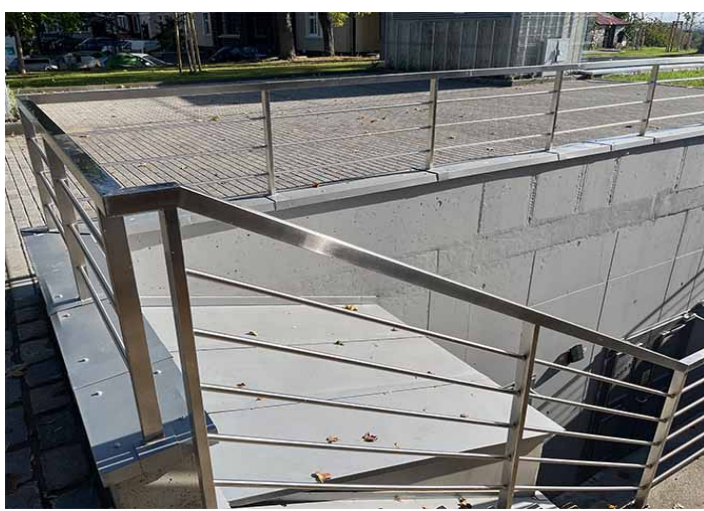
[www.gmlsystem.pl](http://www.gmlsystem.pl)

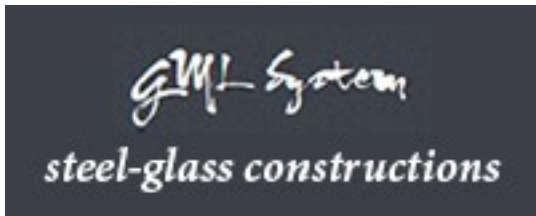
## **Stainless steel rod balustrade for stairs, terraces ( Product LCH-G-ESTL-6-E )**

**Stainless steel balustrade with handrail and posts from quare steel profile, horizontal rod infill.**

Handrail, posts, horizontal rods, fittings available in 304 or 316 grade stainless steel

### **Sample project**





Limanowskiego 6/21, 30-534 Krakow



+48 515 322608, +48 606 363000



[info@gmlsystem.pl](mailto:info@gmlsystem.pl)



[www.gmlsystem.pl](http://www.gmlsystem.pl)



## Technical Details:

1. stainless steel handrail and posts from square steel profile 50x50x2 mm,
2. height 1000 mm (to top of rail),
3. filling with 3 horizontal rods à 20mm,
4. base plates for mounting

Top mounting.

## Production time 3-5 weeks

Pre-assembly of posts with other parts, such as handrail supports and base plates, takes place in workshop.