

Limanowskiego 6/21, 30-534 Krakow



+48 515 322608, +48 606 363000



[info@gmlsystem.pl](mailto:info@gmlsystem.pl)



[www.gmlsystem.pl](http://www.gmlsystem.pl)

## Stainless steel wire balustrade for terraces ( Product LCH-G-ESTL-2-E )

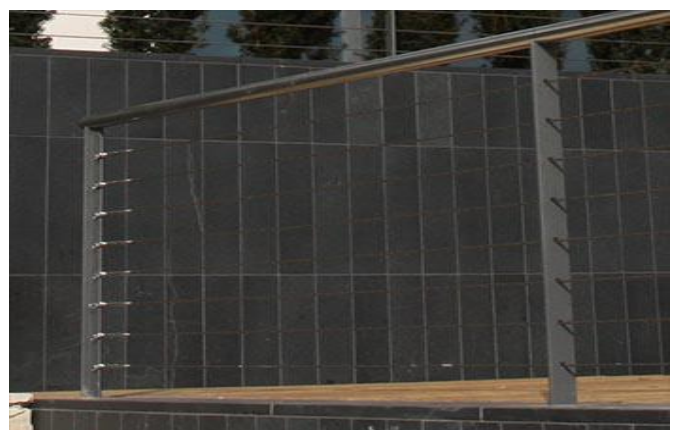
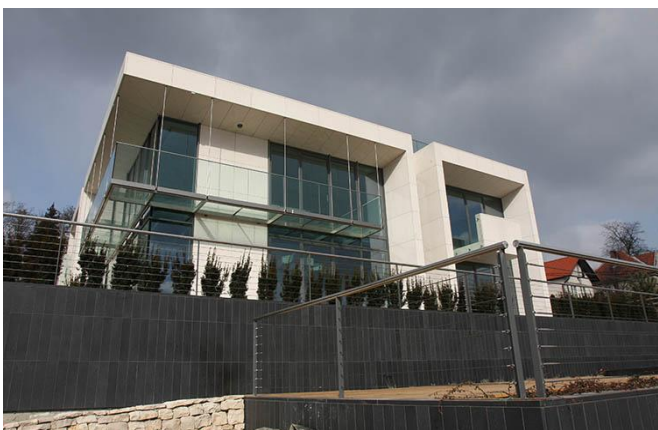
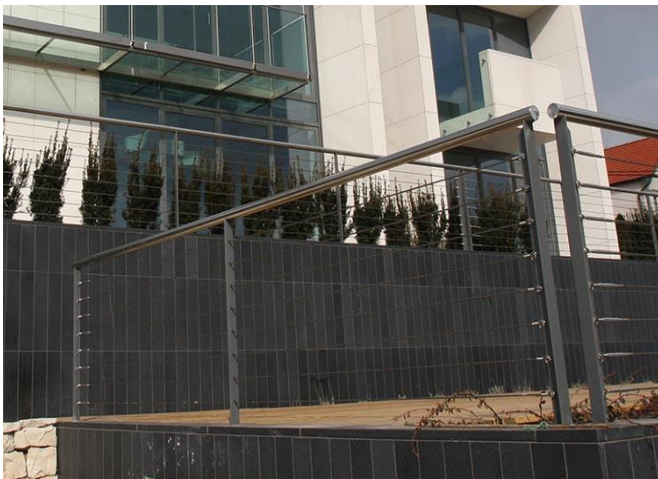
### Stainless steel balustrade with tubular, polished stainless steel handrail. Wire rope infill.

Posts from galvanized steel, powder painted.

Handrail, wire rope, fittings available in 304 or 316 grade stainless steel.

Rope tensioner (tensioning screws) from stainless steel.

### Sample project



*GML System*  
steel-glass constructions



Limanowskiego 6/21, 30-534 Krakow



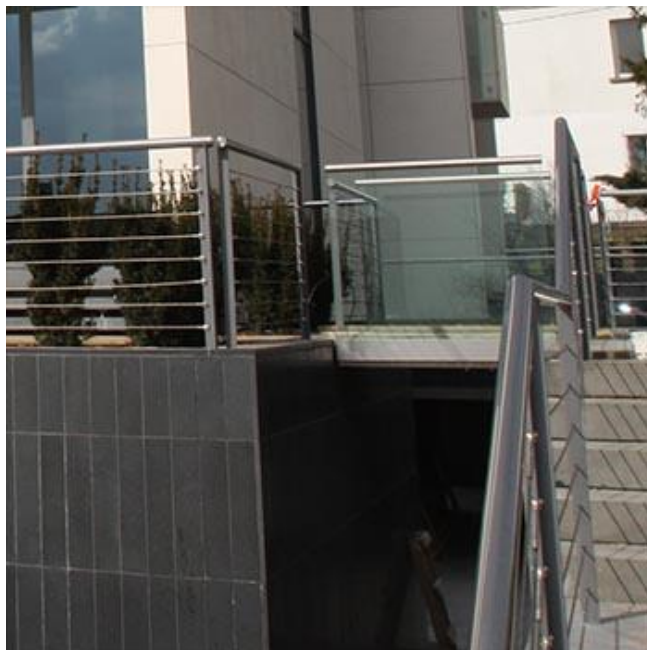
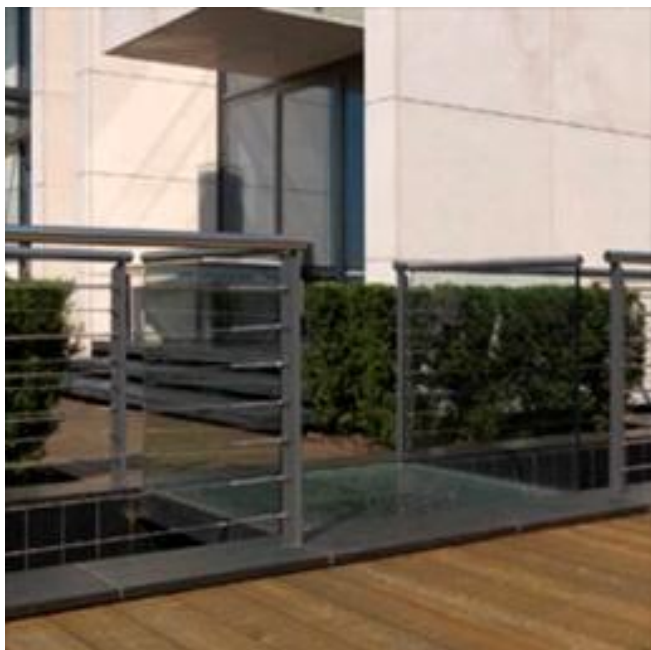
+48 515 322608, +48 606 363000



[info@gmlsystem.pl](mailto:info@gmlsystem.pl)

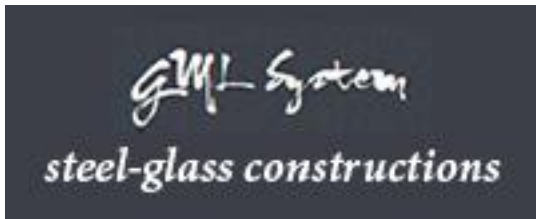


[www.gmlsystem.pl](http://www.gmlsystem.pl)



### **Technical Details:**

1. polished, stainless steel handrail from tube  $\varnothing$  42 mm,
2. posts from galvanized steel L-profile 40x40x6mm,



Limanowskiego 6/21, 30-534 Krakow



+48 515 322608, +48 606 363000



[info@gmlsystem.pl](mailto:info@gmlsystem.pl)



[www.gmlsystem.pl](http://www.gmlsystem.pl)

3. height 1000 mm (to top of rail),
4. filling with wire rope 6mm, 8pcs,
5. stainless steel tensioning screws,
6. welded base plates with cover caps

Side mounting.

### **Production time 3-5 weeks**

Pre-assembly of posts with other parts, such as handrail supports and base plates, takes place in workshop.

Stainless steel fittings: base plates, handrail supports, cover and end caps, come from our own production and are available in 304 or 316 grade steel.