

Limanowskiego 6/21, 30-534 Krakow



+48 515 322608, +48 606 363000



[info@gmlsystem.pl](mailto:info@gmlsystem.pl)



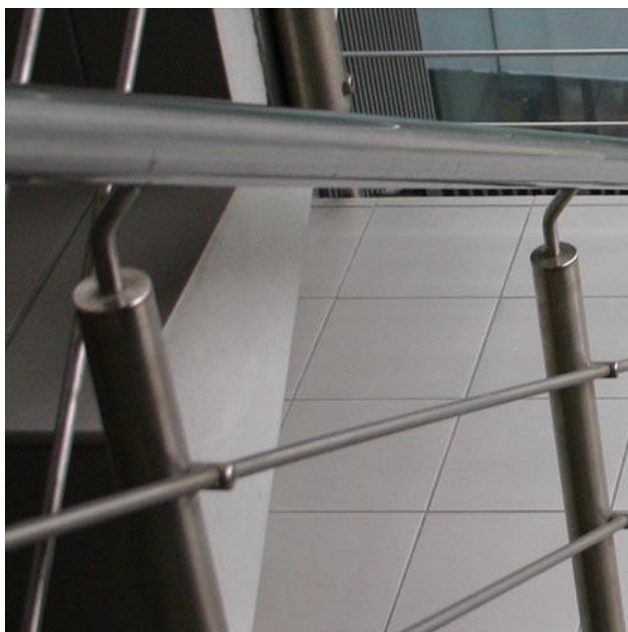
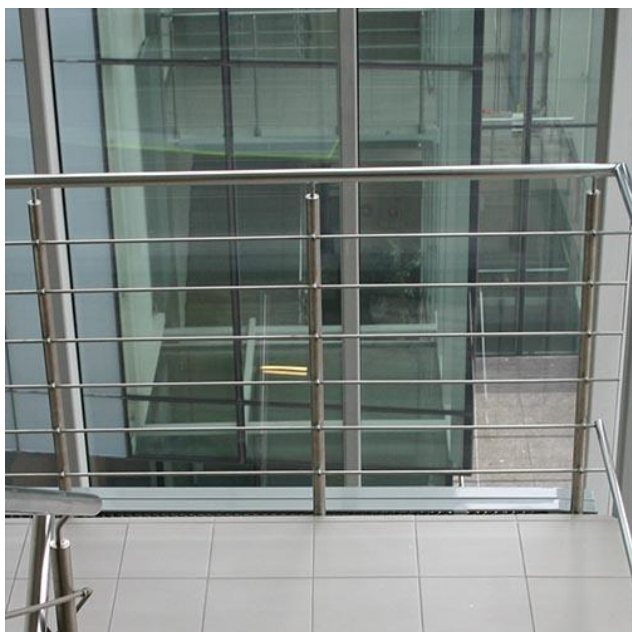
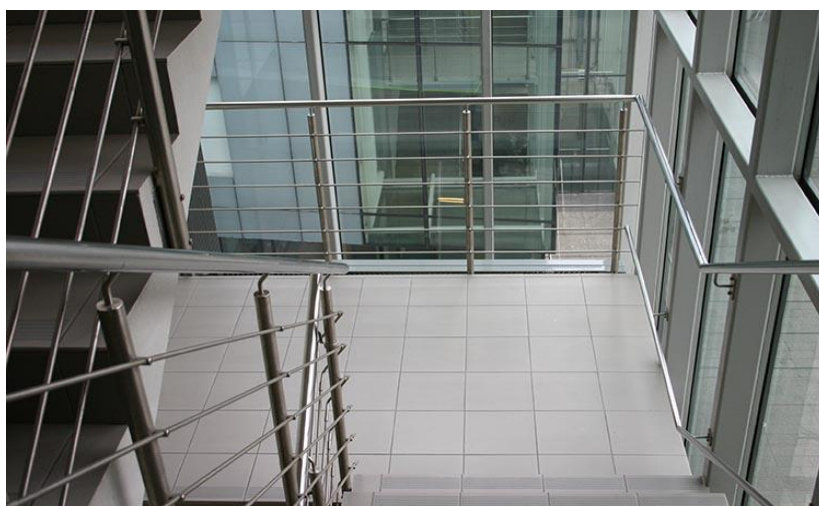
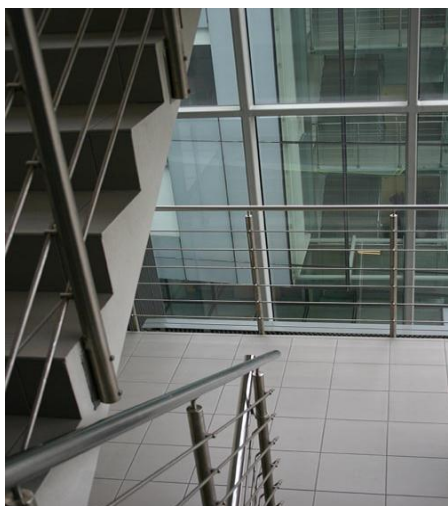
[www.gmlsystem.pl](http://www.gmlsystem.pl)

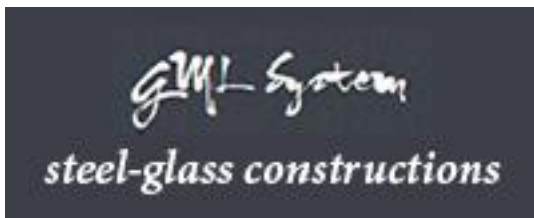
## **Stainless steel rod balustrade for stairs, terraces and balconies** **( Product LCH-G-ESTL-1-E )**

**Stainless steel balustrade with tubular, satin finish stainless steel handrail, posts and horizontal rod infill.**

Handrail, posts, horizontal rods, fittings available in 304 or 316 grade stainless steel.

### **Sample project**





Limanowskiego 6/21, 30-534 Krakow



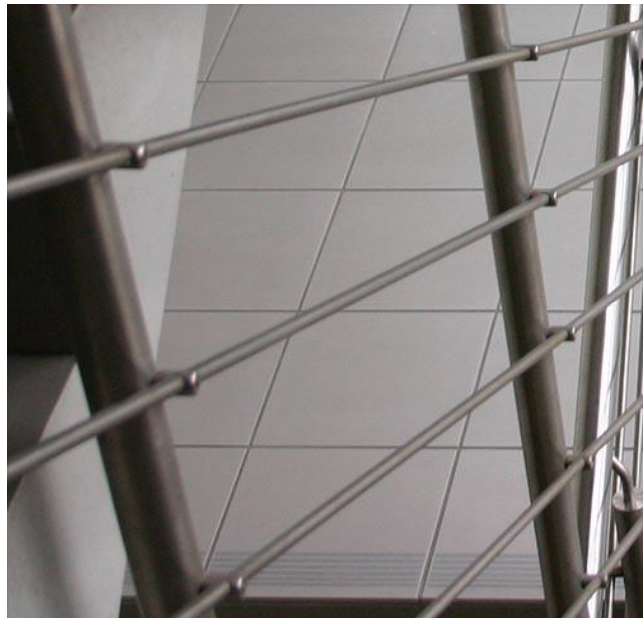
+48 515 322608, +48 606 363000



[info@gmlsystem.pl](mailto:info@gmlsystem.pl)



[www.gmlsystem.pl](http://www.gmlsystem.pl)



### Technical Details:

1. satin finish, stainless steel handrail and posts from tube Ø 42 mm,
2. height 1000 mm (to top of rail),
3. filling with 6 horizontal rods à 10mm,
4. stainless steel rod holders,
5. handrail supports,
6. wall brackets

Side mounting.

### Production time 3-5 weeks

Pre-assembly of posts with other parts, such as handrail supports and wall brackets, takes place in workshop.

Stainless steel fittings: glass clamps, wall brackets, handrail supports, cover and end caps, come from our own production and are available in 304 or 316 grade steel.