

Limanowskiego 6/21, 30-534 Krakow



+48 515 322608, +48 606 363000



info@gmlsystem.pl



www.gmlsystem.eu

Facade cladding with corten panels (Product LCH-F-CORTEN-2-S)

Sample project





Limanowskiego 6/21, 30-534 Krakow



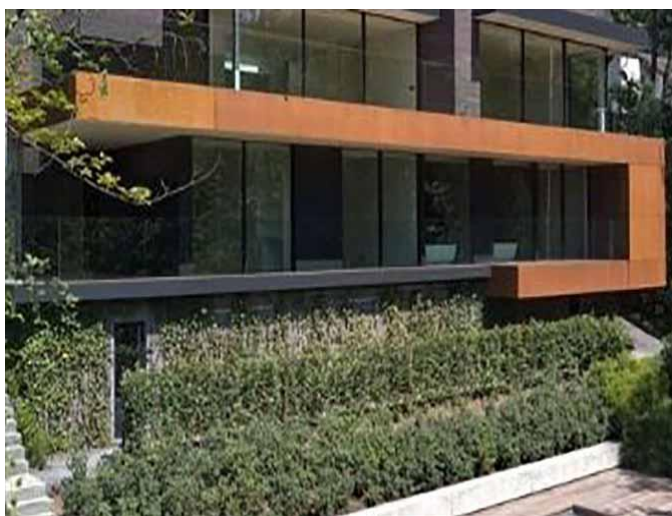
+48 515 322608, +48 606 363000



info@gmlsystem.pl



www.gmlsystem.eu





Limanowskiego 6/21, 30-534 Krakow



+48 515 322608, +48 606 363000



info@gmlsystem.pl



www.gmlsystem.eu



Technical Details:

1. material: CorTen steel sheet 1.5 mm thick,
2. construction: facade cassettes mounted on support frames made of aluminum, steel or stainless steel profiles.