

Limanowskiego 6/21, 30-534 Krakow



+48 515 322608, +48 606 363000



[info@gmlsystem.pl](mailto:info@gmlsystem.pl)

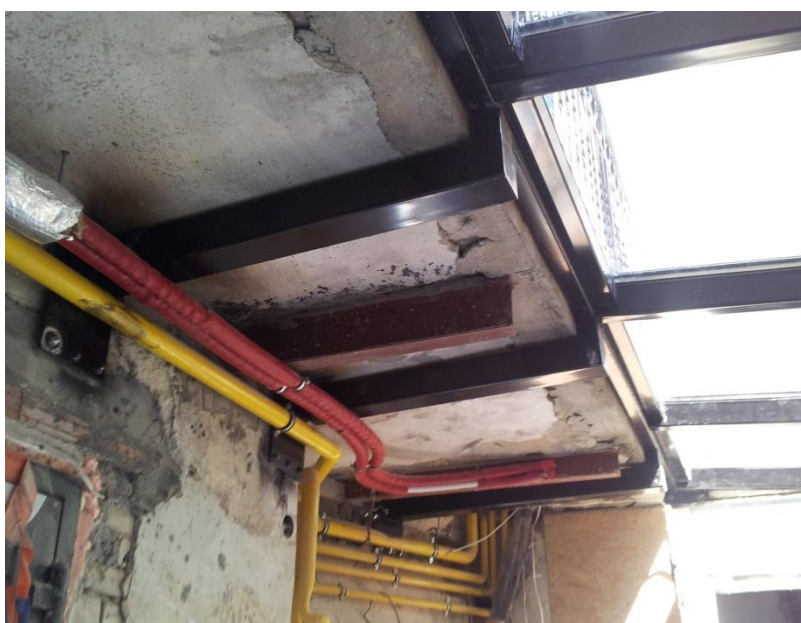


[www.gmlsystem.eu](http://www.gmlsystem.eu)

## Glass roof and wall with steel supporting structure ( Product LCH-D-GUDACH-12-S )

### Sample project





## Technical Details:

1. steel structure from galvanized, powder painted steel profiles,
2. double glazing from safety glass VSG ESG installed on top of steel structure,
3. glass wall with door,
4. fixing of column bases in concrete foundation,
5. drainage system with a roof gutter and an outlet pipe,
6. produced with welded steel.

**Production time 6-8 weeks**