

+48 515 322608, +48 606 363000



info@gmlsystem.pl



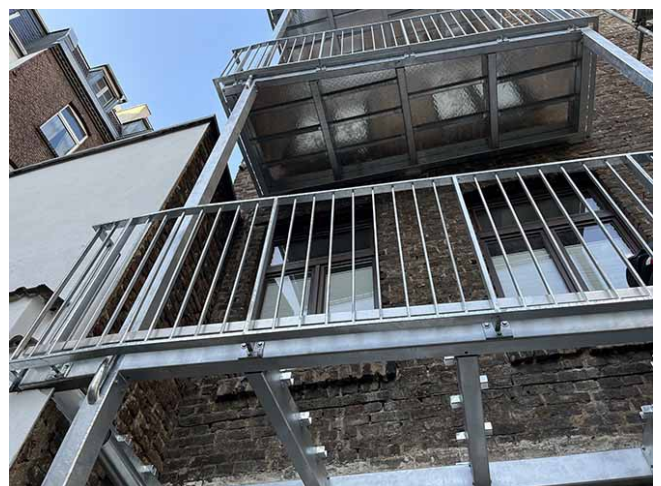
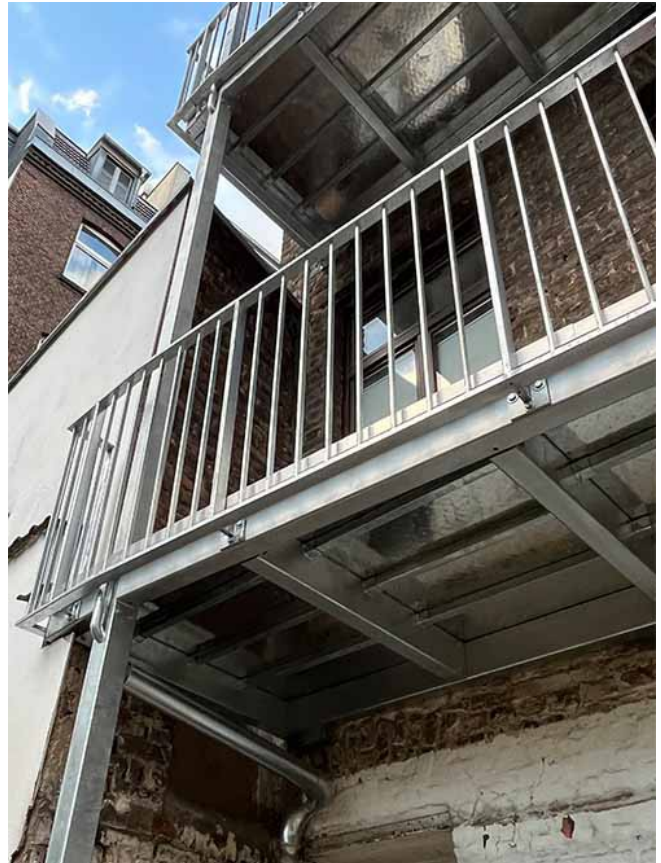
www.gmlsystem.eu

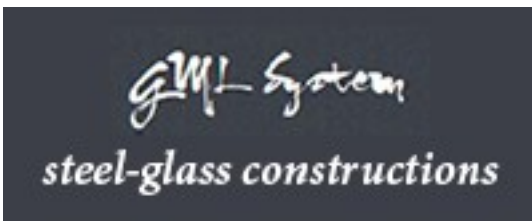


Balcony with steel construction and steel railing (Product LCH-B-STAH-6-S)

Balcony with support structure made of galvanized steel profiles and steel railing.

Sample project





+48 515 322608, +48 606 363000



info@gmlsystem.pl



www.gmlsystem.eu



Technical Details:

1. construction: support structure consisting of frames and posts made of galvanized steel profiles, flooring from aluminum sheet, drainage system with gutter and an outlet pipe in a post,
2. railing: steel balustrade, filling with vertical bars.