



Limanowskiego 6/21, 30-534 Krakow



+48 515 322608, +48 606 363000



[info@gmlsystem.pl](mailto:info@gmlsystem.pl)

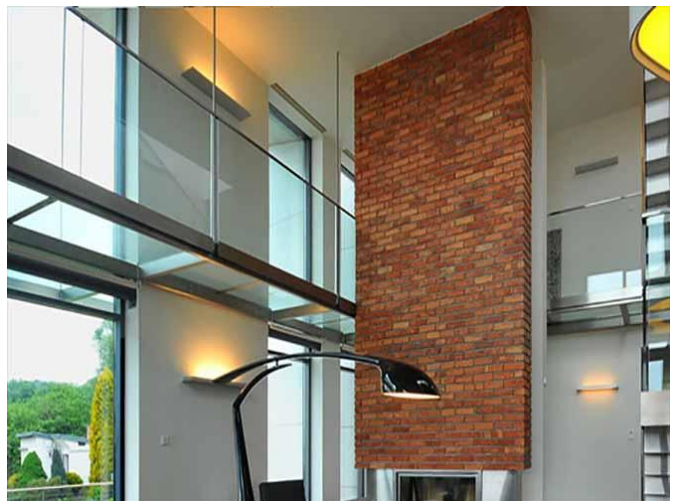


[www.gmlsystem.eu](http://www.gmlsystem.eu)

## Mezzanine with stainless steel construction and frameless glass railing balustrade ( Product LCH-B-ESTABL-1-G)

Mezzanine with stainless steel construction, glass flooring and frameless glass balustrades with stainless handrail.

### Sample project





### **Technical Details:**

1. construction: support structure consisting of frames made of stainless steel profiles suspended from the ceiling with the help of stainless rods, glass flooring,
2. railing: frameless glass balustrade, mounting in stainless steel profile.